

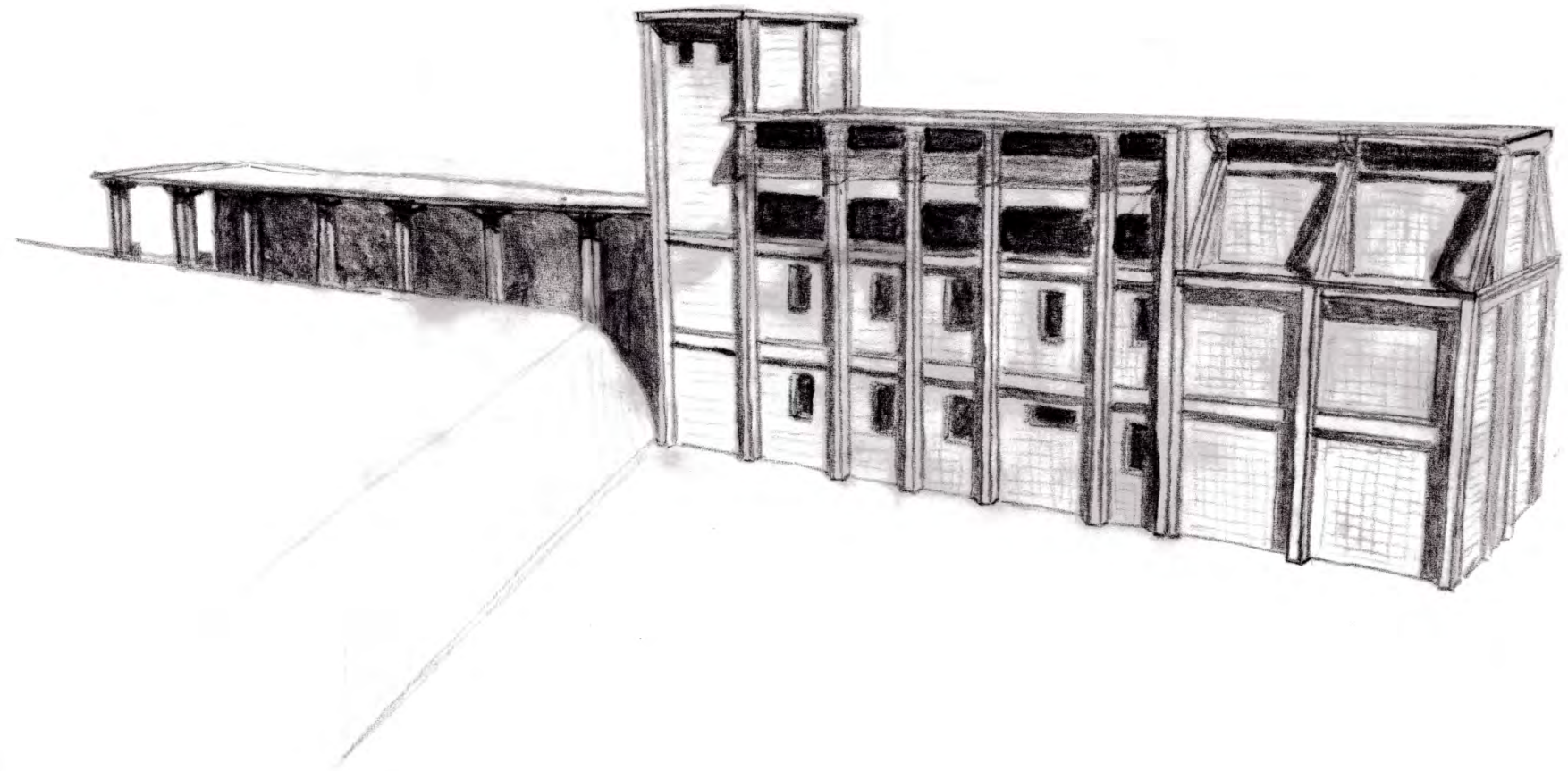
'The Theatre Machine'

Martin Beumer

Maastricht 2015



De gas fabriek 1913/1914



J.G. Wiebenga, 'Apostel van Het Nieuwe Bouwen'

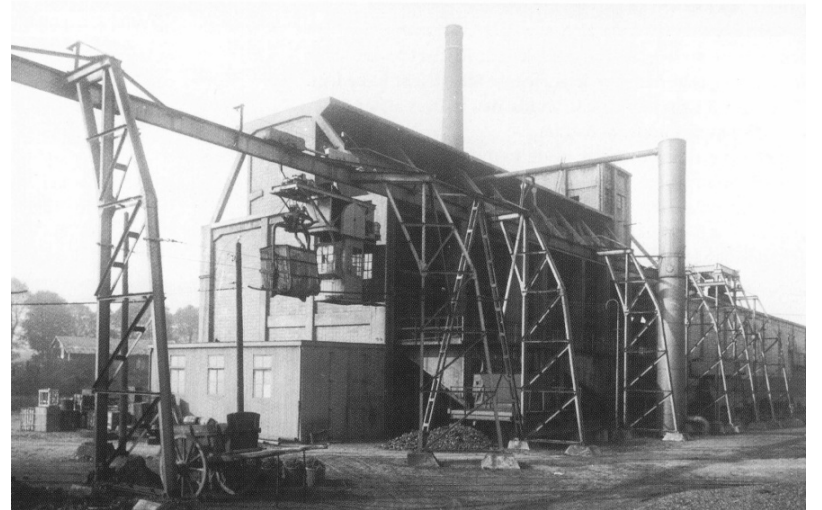
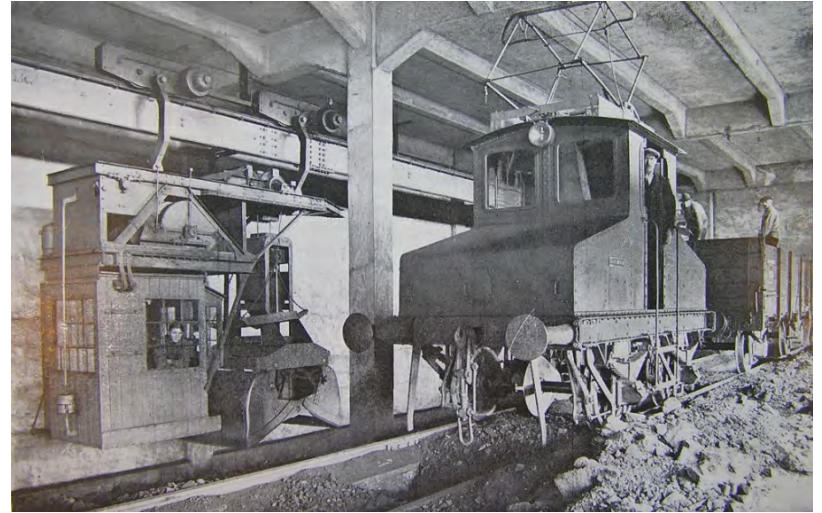
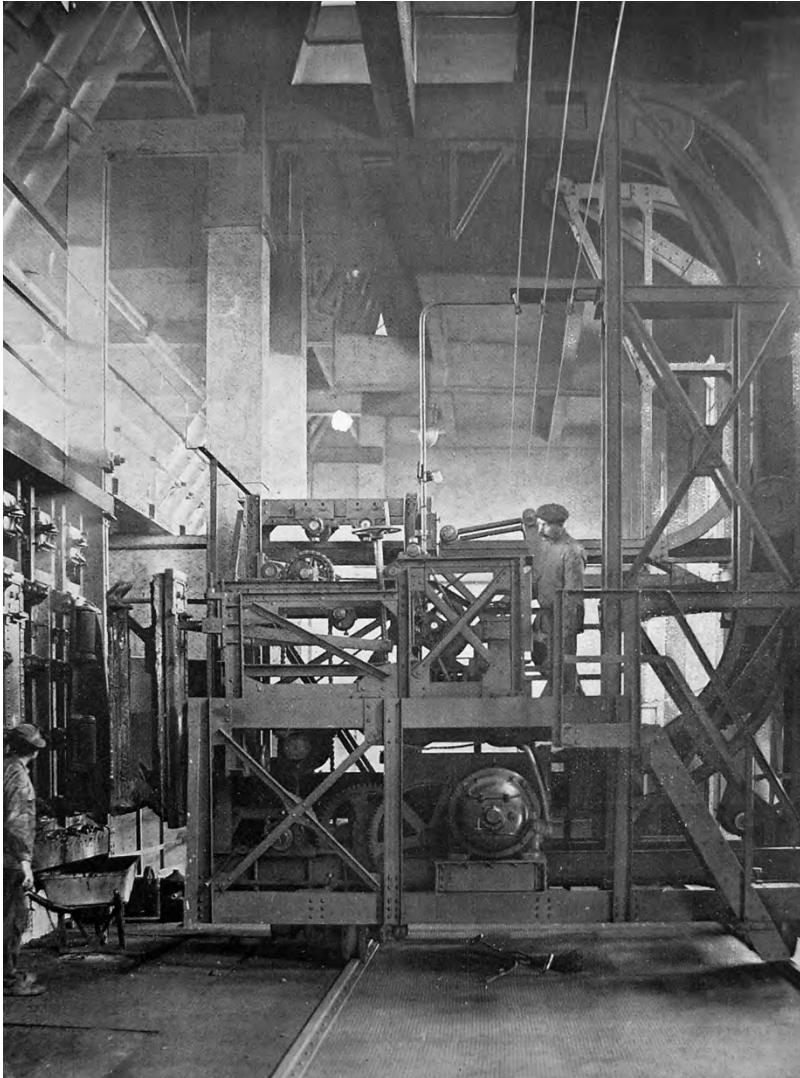


Van Nelle fabriek, Rotterdam

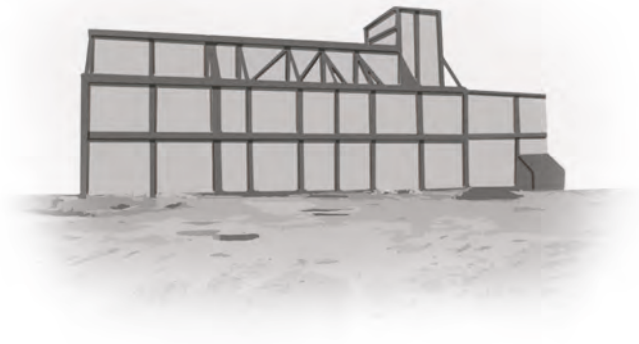


Sanatorium Zonnestraal, Hilversum

Beton vs Staal -> Constructie vs Machine



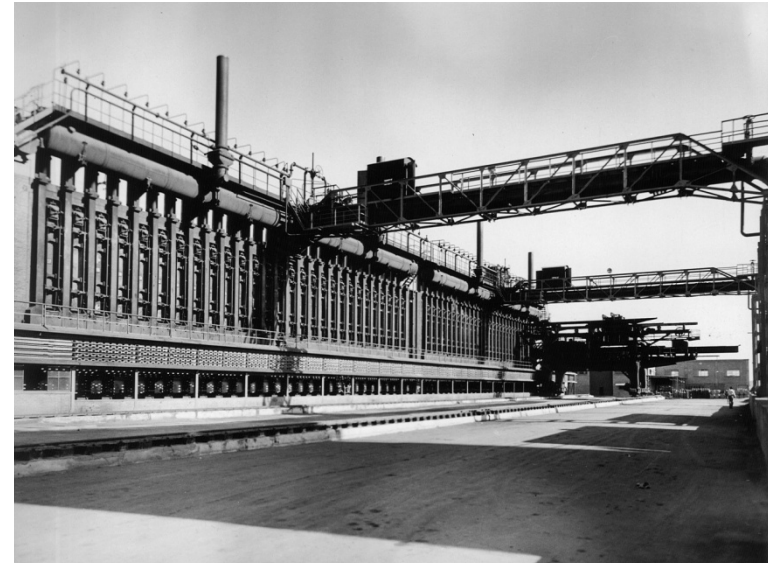
Begin 2015, sloop kolenloodsen -> verandering compositie



**Programma: Theater Decor workshop -> een geoliede
machine -> nodig: veel m2 op BG**



Inspiratie -> Gasovens, Staalovens en walsen





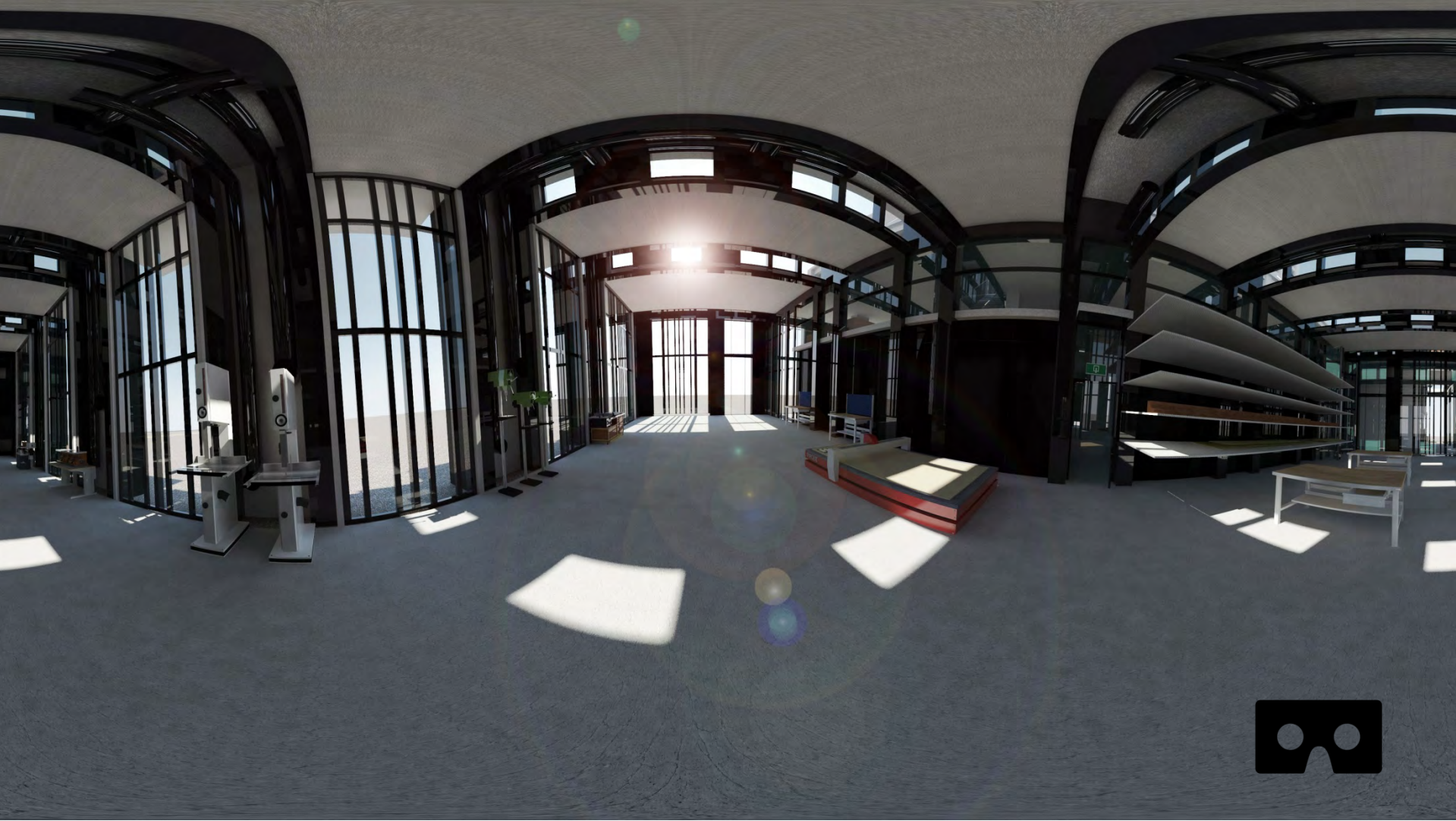
'The Theatre Machine' een theatrale verschijning



Gescheiden metaal en hout bewerking



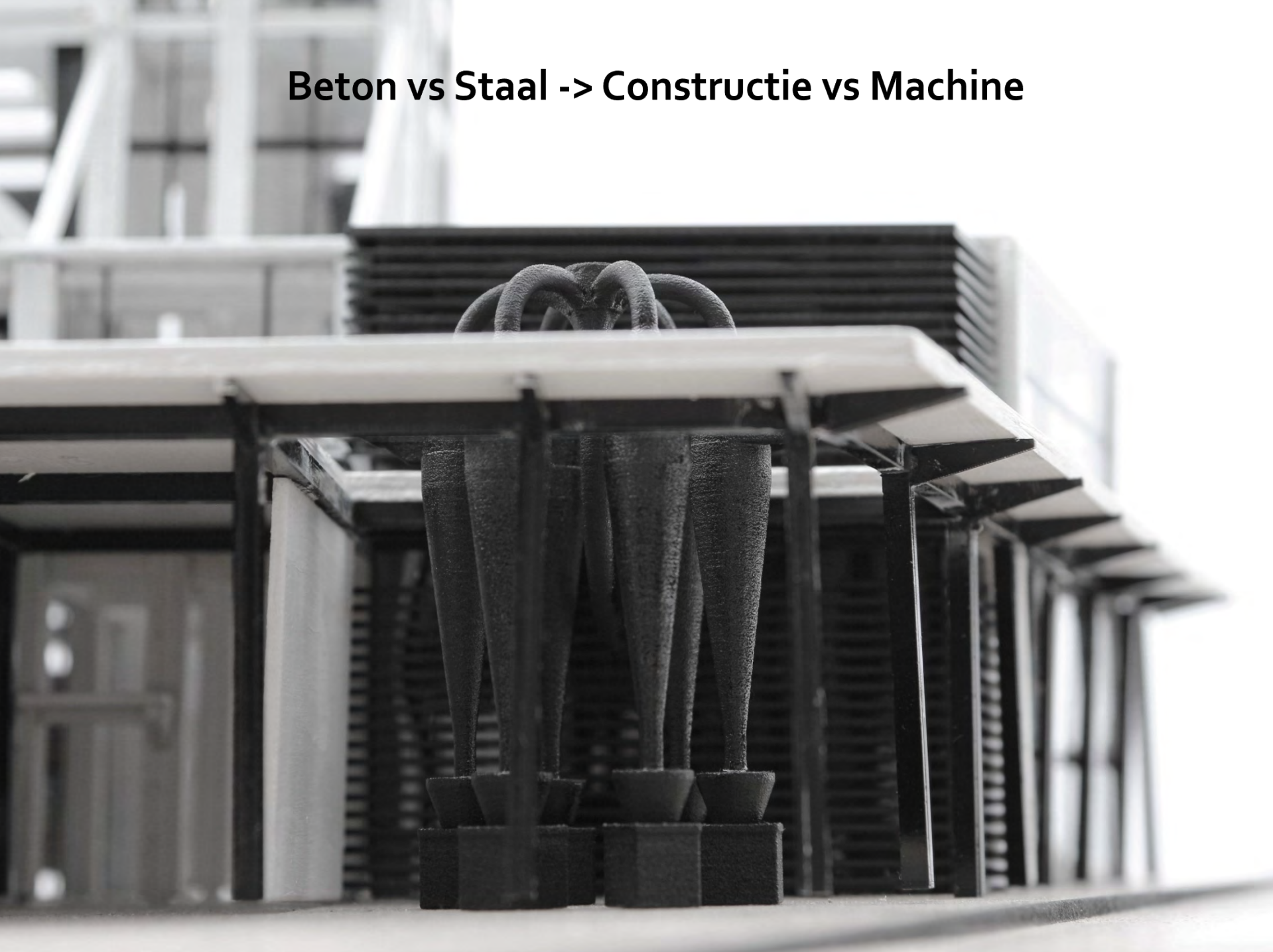
Grote vrije overspanningen staalconstructie



Horizontale lijnen vs verticale accenten



Beton vs Staal -> Constructie vs Machine



Zuid-west gevel: Omgekeerde gevelpanelen





Lichtspel accentueert de monumentale constructie

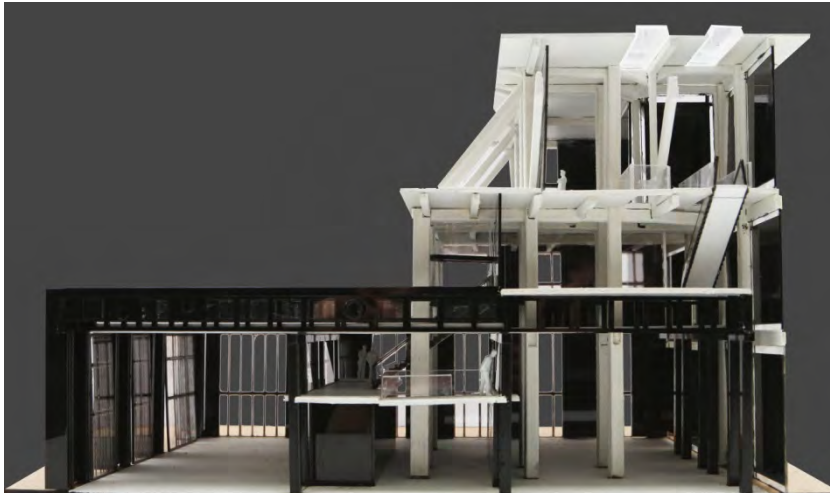


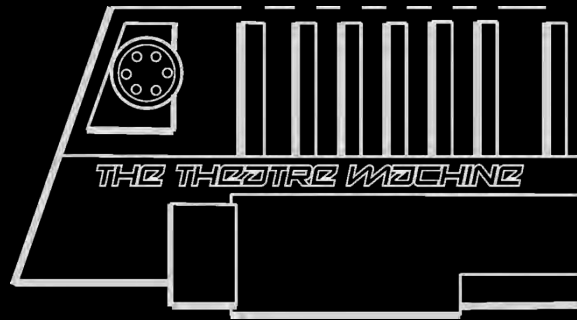
Staalconstructies accentueren de overgangen



Beton vs Staal

Modernisme vs Machine





'The Theatre Machine'

Martin Beumer